

Monthly Surveillance Report

Saint Louis County Department of Public Health - Division of Communicable Disease Prevention

Report Month: November

Report Date: December 02, 2024

Report Summary

[In general, the year-to-date number of reported cases of **enteric illnesses** are higher when compared with the median of the past five years. Notably, cases of **shigellosis** (32 vs. 16 cases, 100% increase) and **salmonellosis** (129 vs. 111 cases, 16% increase) are higher when compared with the year-to-date median of the past five years. Please note that the sharp increase in **E. Coli O157:H7** cases can be attributed to a recent outbreak.

In November 2024, there were 66 reported cases of **pertussis**, which brings the year-to-date total to 225 cases.

One thousand, one hundred and thirty-four cases of **COVID-19** were reported to DPH in November 2024. This is a 22 percent decrease from the 1,462 cases reported in October 2024. For more information on **COVID-19**, please visit our website at: <https://stlouiscountymo.gov/st-louis-county-departments/public-health/covid-19/covid-19-data-reports/>

For more information on sexually transmitted infections (STIs), please visit our website at: <https://stlouiscountymo.gov/st-louis-county-departments/public-health/health-data-and-statistics/communicable-disease-reports/sexually-transmitted-infections/>.

If you need to reach us at any time outside of normal business hours, please note the following:

To report a public health emergency in Saint Louis County: During normal business hours - Monday through Friday 8:00 a.m. - 5:00 p.m., call Saint Louis County DPH at (314) 615-1630.

At all other times: call (314) 615-7677 or fax (314) 615-7643.

To report any Saint Louis area Hazardous Material concern: Call 911.]

Data Notes: This report includes confirmed and probable cases; suspect cases are not included. These data are provisional as of December 02, 2024.

Table 1: Summary Table

Condition	Year to Date			Monthly Totals		
	5-year Median	2024 Cases	% Change	Sep	Oct	Nov
Type: Bite Exposure						
Animal bites	382	485	27.0	59	49	20
Rabies post-exposure prophylaxis (RPEP)	164	346	111.0	50	32	13
Rabies, animal	4	7	75.0	1	3	0
Total		838		110	84	33
Type: Enterics						
Campylobacteriosis	103	97	-5.8	5	9	7
Cryptosporidiosis	20	23	15.0	2	6	3
Cyclosporiasis	19	18	-5.3	1	1	0
E. coli O157:H7	4	97	2,325.0	1	0	89
E. coli shiga toxin (non-O157)	25	31	24.0	6	4	0
Giardiasis	27	31	14.8	2	1	1
Listeriosis	3	4	33.3	0	0	1
Salmonellosis	111	129	16.2	16	14	13
Shigellosis	16	32	100.0	4	6	0
Typhoid fever	2	2	0.0	1	0	0
Vibriosis	3	2	-33.3	2	0	0
Yersiniosis	12	10	-16.7	1	1	1
Total		476		41	42	115
Type: Mycobacterial						
Latent TB infection (LTBI)	363	252	-30.6	20	20	12

Table 1: **Summary Table**

Condition	Year to Date			Monthly Totals		
	5-year Median	2024 Cases	% Change	Sep	Oct	Nov
Nontuberculosis mycobacteria (NTM)	117	128	9.4	12	16	7
TB disease	15	15	0.0	0	2	3
Total		395		32	38	22
Type: Sexually Transmitted						
Chlamydia	5,812	5,545	-4.6	512	588	359
Gonorrhea	2,923	2,316	-20.8	238	271	206
Syphilis, total	508	448	-11.8	29	41	14
Total		8,309		779	900	579
Type: Systemic						
Botulism	0	0		0	0	0
Brucellosis	0	0		0	0	0
Coccidioidomycosis	0	0		0	0	0
Creutzfeld-Jakob disease (CJD)	0	0		0	0	0
Haemophilus influenzae, invasive	14	24	71.4	1	3	2
Legionellosis	18	25	38.9	3	1	1
Mpox	0	7		0	0	1
Strep Pneumoniae, invasive	49	80	63.3	6	7	5
Toxic shock syndrome (strep or staph)	1	3	200.0	0	0	0
Total		139		10	11	9
Type: Vaccine-Preventable						
COVID-19	56,319	23,087	-59.0	2,981	1,462	1,133

Table 1: **Summary Table**

Condition	Year to Date			Monthly Totals		
	5-year Median	2024 Cases	% Change	Sep	Oct	Nov
Diphtheria	0	0		0	0	0
Measles	0	0		0	0	0
Meningococcal disease	1	1	0.0	0	0	0
Mumps	0	0		0	0	0
Pertussis	6	225	3,650.0	21	74	66
Rubella	0	0		0	0	0
Tetanus	0	0		0	0	0
Varicella (chickenpox)	11	4	-63.6	0	0	0
Total		23,317		3,002	1,536	1,199
Type: Vectorborne						
Anaplasmosis	2	3	50.0	0	0	1
Chikungunya virus	0	0		0	0	0
Dengue fever	1	7	600.0	1	0	0
Ehrlichiosis	32	49	53.1	5	1	0
Lyme disease	3	5	66.7	2	1	0
Malaria	2	1	-50.0	0	0	0
Rocky Mountain spotted fever	4	4	0.0	0	0	0
Tularemia	1	0	-100.0	0	0	0
West Nile virus	1	3	200.0	0	1	0
Yellow fever	0	0		0	0	0
Zika virus	0	0		0	0	0

Table 1: **Summary Table**

Condition	Year to Date			Monthly Totals		
	5-year Median	2024 Cases	% Change	Sep	Oct	Nov
Total		72		8	3	1
Type: Viral Hepatitis						
Hepatitis A, acute	5	3	-40.0	2	0	0
Hepatitis B, acute	4	5	25.0	1	1	0
Hepatitis B, chronic	87	154	77.0	18	18	16
Hepatitis B, prenatal	14	11	-21.4	1	0	0
Hepatitis C, acute	7	5	-28.6	1	0	0
Hepatitis C, chronic	287	206	-28.2	19	23	18
Total		384		42	42	34

Campylobacteriosis: 7 new case(s) of Campylobacteriosis reported November, 2024

Fig. 1. Cumulative Campylobacteriosis Cases
By Month of Report

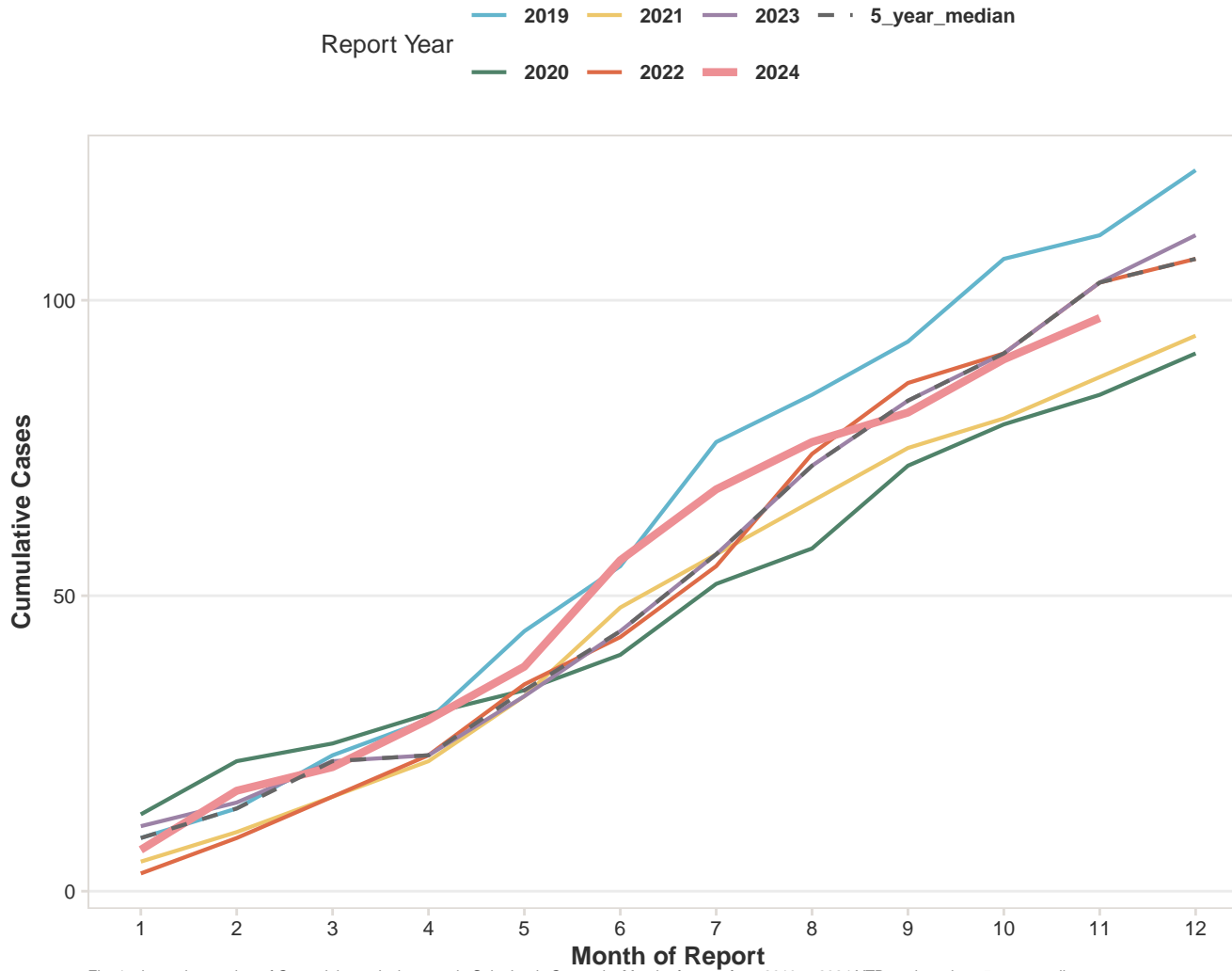


Fig. 1. shows the number of Campylobacteriosis cases in Saint Louis County by Month of report from 2019 to 2024 YTD, and previous 5-year median.

Cryptosporidiosis: 3 new case(s) of Cryptosporidiosis reported November, 2024

Fig. 2. Cumulative Cryptosporidiosis Cases
By Month of Report

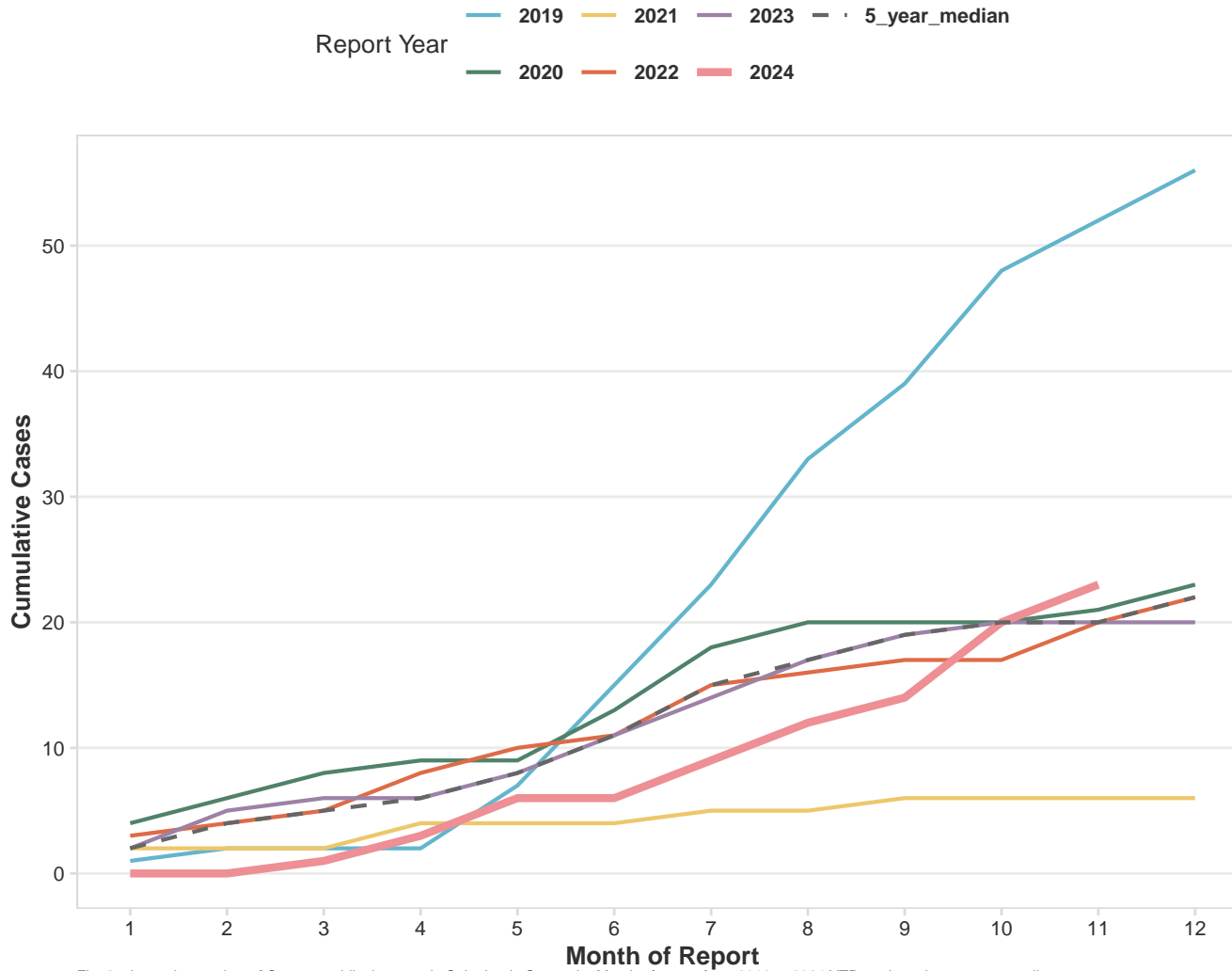


Fig. 2. shows the number of Cryptosporidiosis cases in Saint Louis County by Month of report from 2019 to 2024 YTD, and previous 5-year median.

Cyclosporiasis: 0 new case(s) of Cyclosporiasis reported November, 2024

Fig. 3. Cumulative Cyclosporiasis Cases
By Month of Report

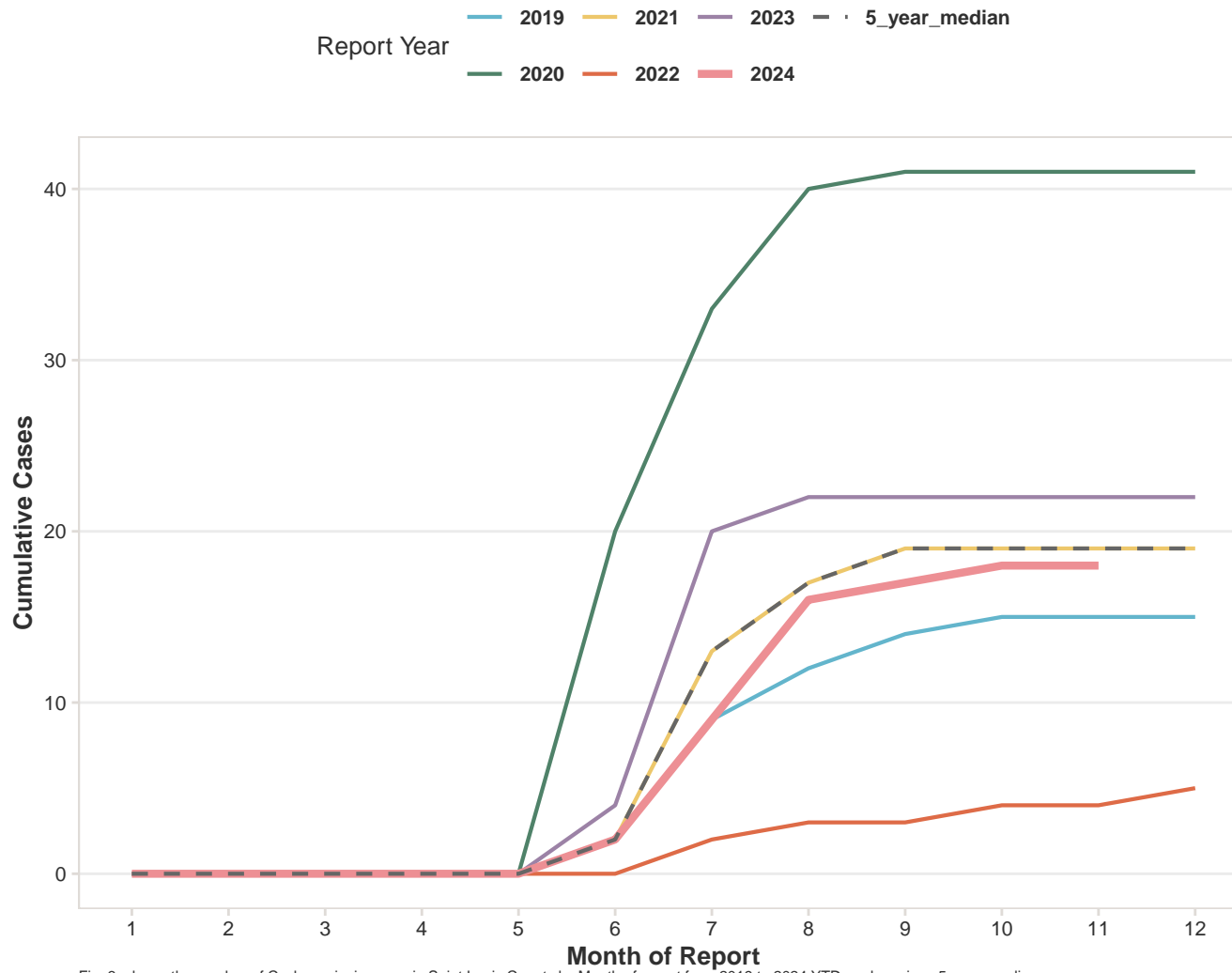


Fig. 3. shows the number of Cyclosporiasis cases in Saint Louis County by Month of report from 2019 to 2024 YTD, and previous 5-year median.

E. coli O157:H7: 89 new case(s) of E. coli O157:H7 reported November, 2024

Fig. 4. Cumulative E. coli O157:H7 Cases
By Month of Report

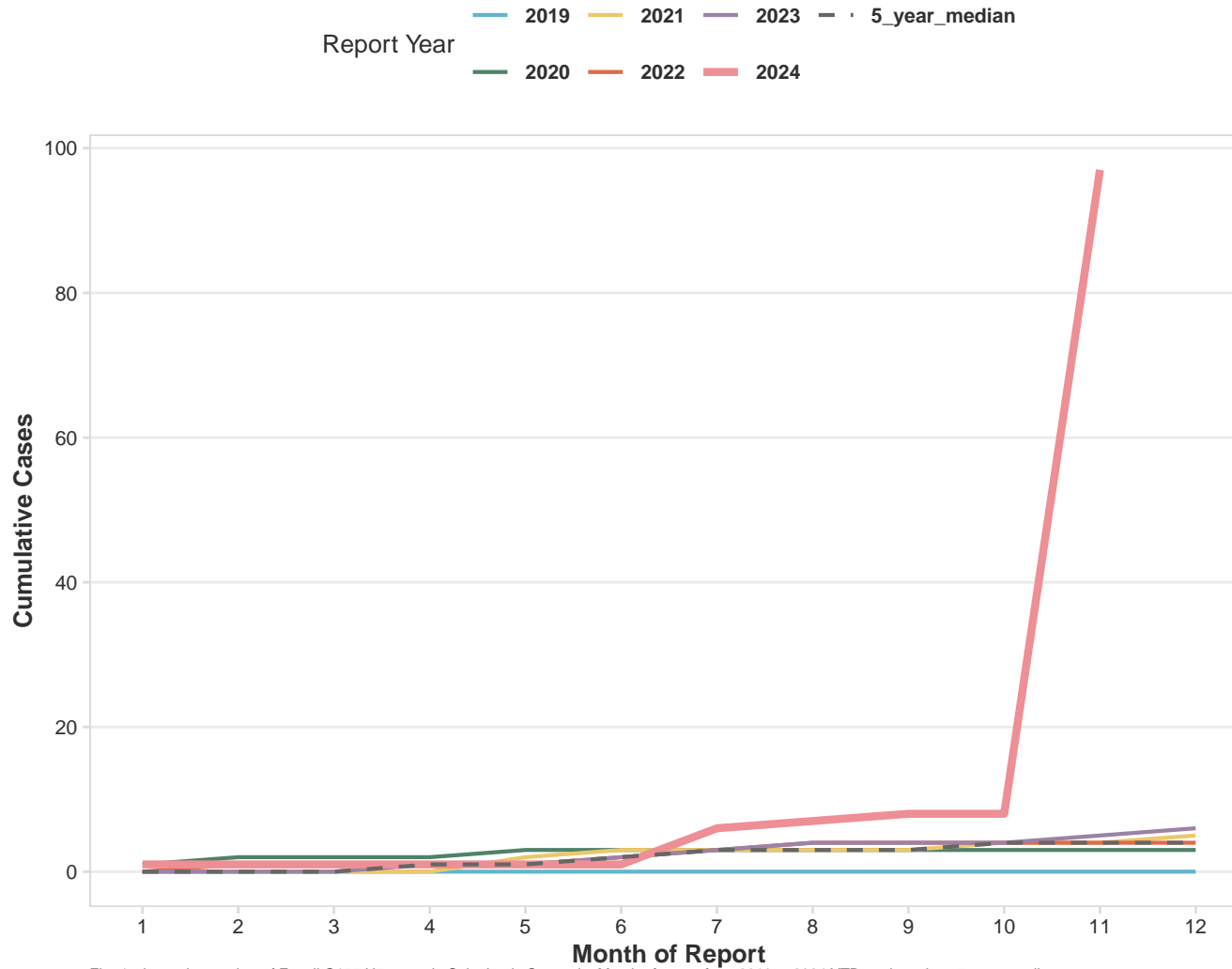


Fig. 4. shows the number of E. coli O157:H7 cases in Saint Louis County by Month of report from 2019 to 2024 YTD, and previous 5-year median.

E. coli shiga toxin (non-O157): 0 new case(s) of E. coli shiga toxin (non-O157) reported November, 2024

Fig. 5. Cumulative E. coli shiga toxin (non-O157) Cases
By Month of Report

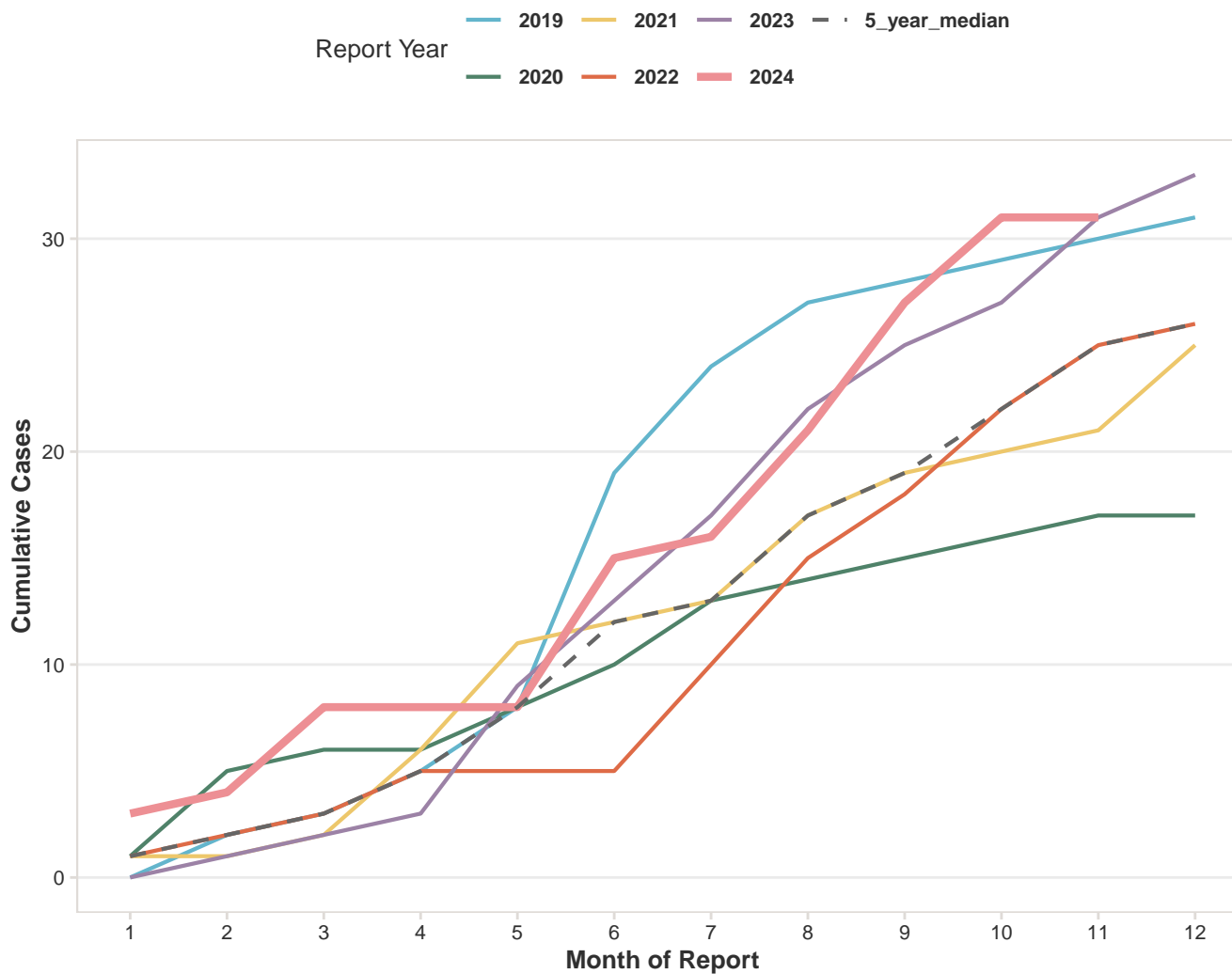


Fig. 5. shows the number of E. coli shiga toxin (non-O157) cases in Saint Louis County by Month of report from 2019 to 2024 YTD, and previous 5-year median.

Ehrlichiosis: 0 new case(s) of Ehrlichiosis reported November, 2024

Fig. 6. Cumulative Ehrlichiosis Cases
By Month of Report

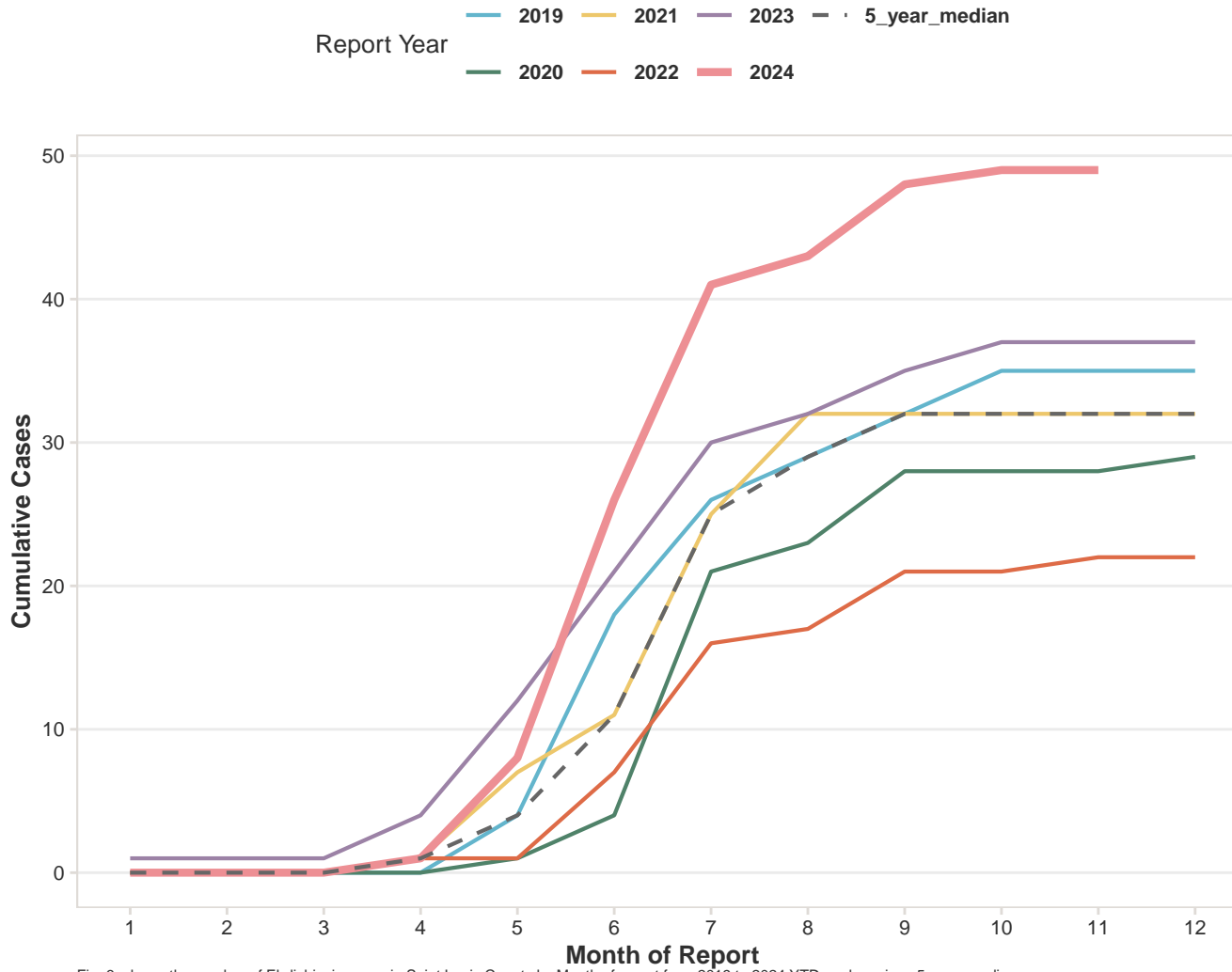


Fig. 6. shows the number of Ehrlichiosis cases in Saint Louis County by Month of report from 2019 to 2024 YTD, and previous 5-year median.

Hepatitis A, acute: 0 new case(s) of Hepatitis A, acute reported November, 2024

Fig. 7. Cumulative Hepatitis A, acute Cases
By Month of Report

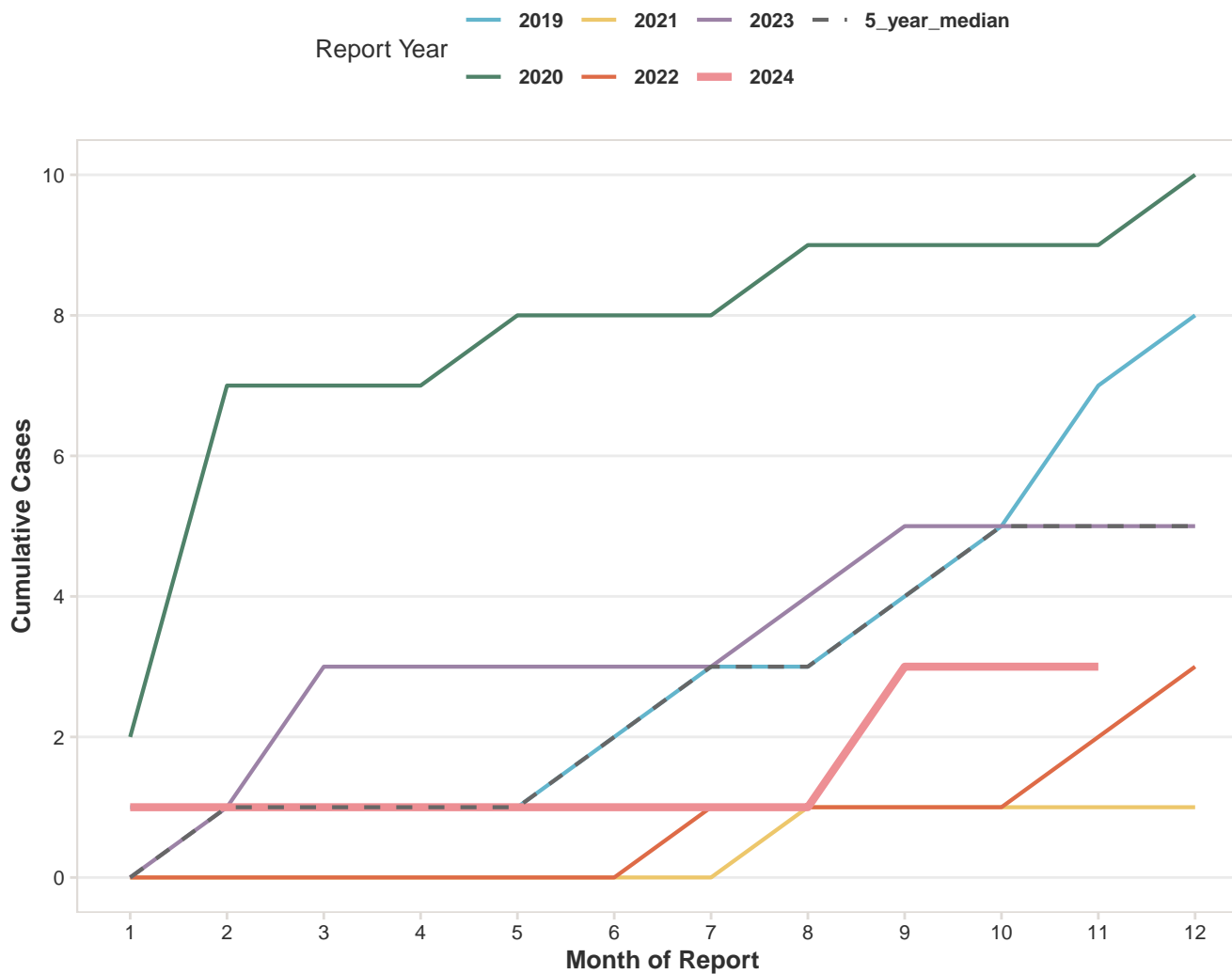


Fig. 7. shows the number of Hepatitis A, acute cases in Saint Louis County by Month of report from 2019 to 2024 YTD, and previous 5-year median.

Hepatitis B, acute: 0 new case(s) of Hepatitis B, acute reported November, 2024

Fig. 8. Cumulative Hepatitis B, acute Cases
By Month of Report

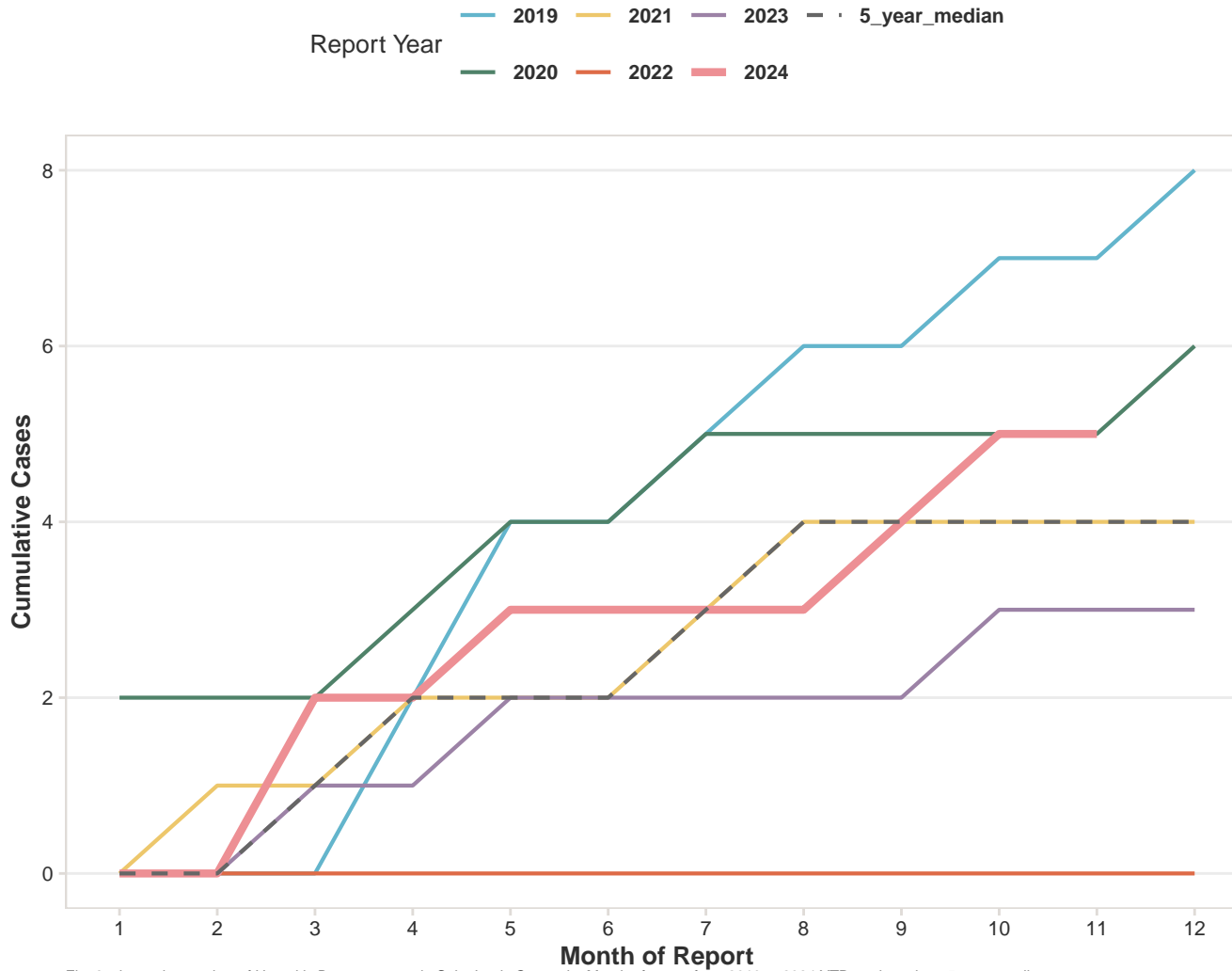


Fig. 8. shows the number of Hepatitis B, acute cases in Saint Louis County by Month of report from 2019 to 2024 YTD, and previous 5-year median.

Hepatitis C, acute: 0 new case(s) of Hepatitis C, acute reported November, 2024

Fig. 9. Cumulative Hepatitis C, acute Cases
By Month of Report

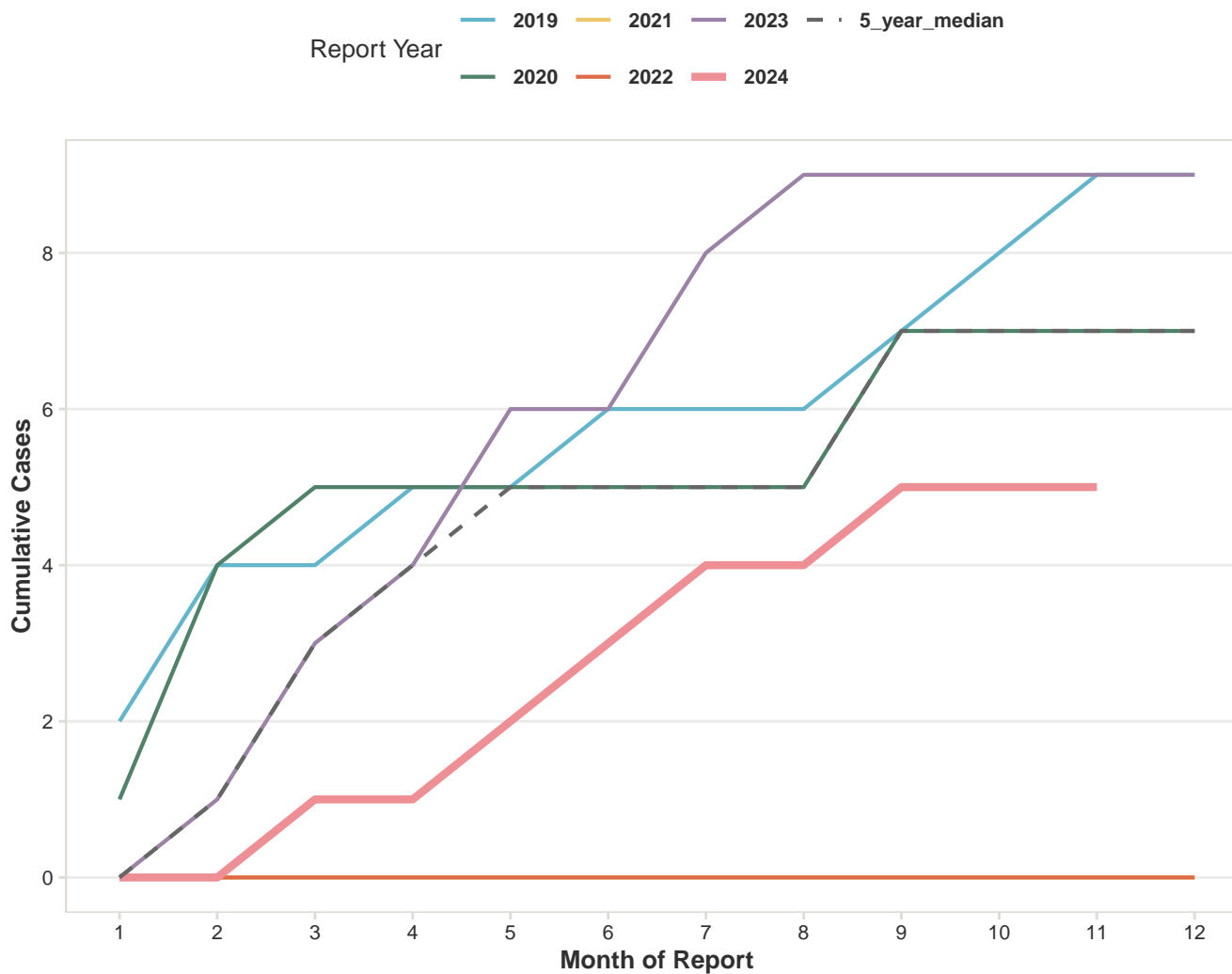


Fig. 9. shows the number of Hepatitis C, acute cases in Saint Louis County by Month of report from 2019 to 2024 YTD, and previous 5-year median.

Legionellosis: 1 new case(s) of Legionellosis reported November, 2024

Fig. 10. Cumulative Legionellosis Cases
By Month of Report

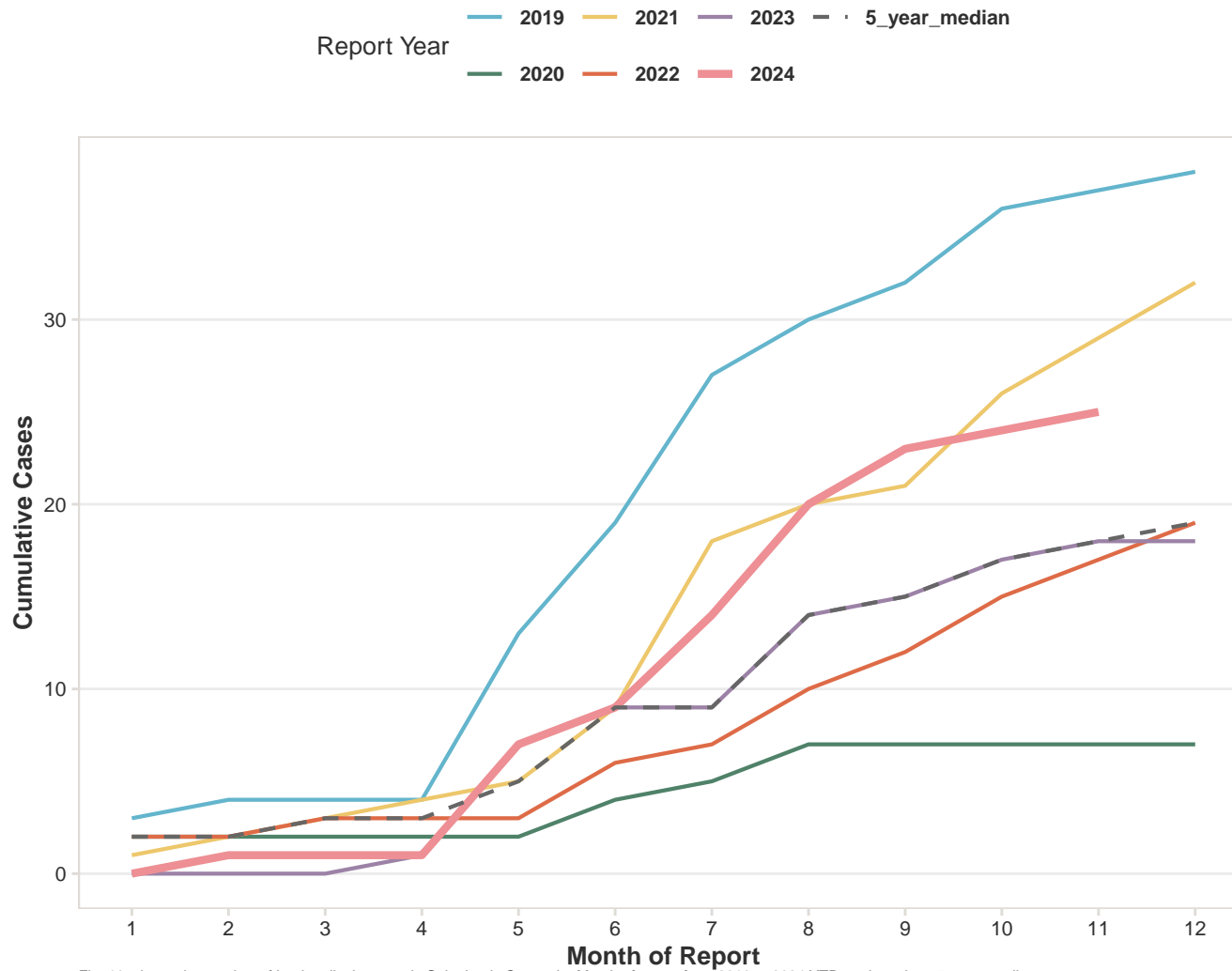


Fig. 10. shows the number of Legionellosis cases in Saint Louis County by Month of report from 2019 to 2024 YTD, and previous 5-year median.

Pertussis: 66 new case(s) of Pertussis reported November, 2024

Fig. 11. Cumulative Pertussis Cases
By Month of Report

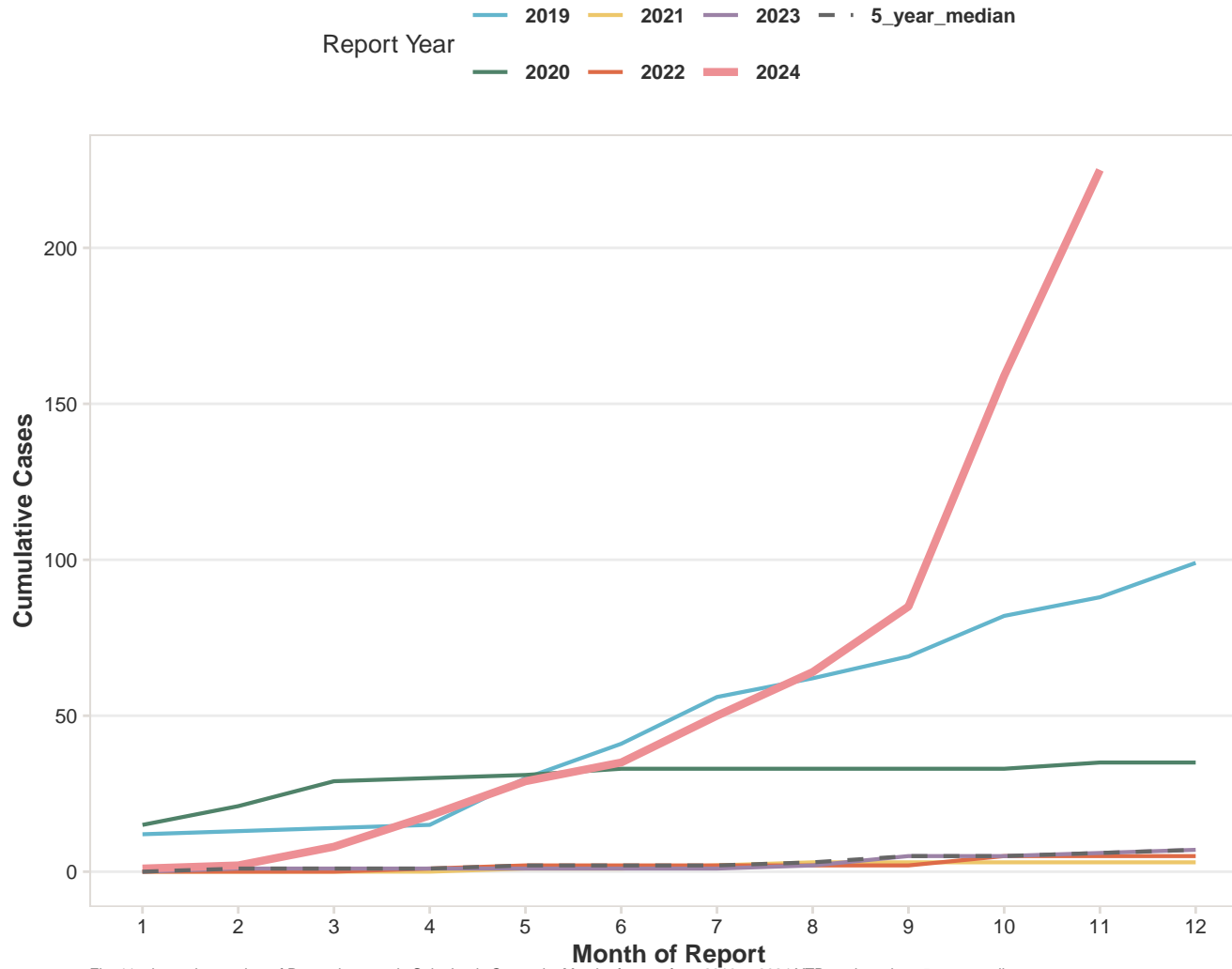


Fig. 11. shows the number of Pertussis cases in Saint Louis County by Month of report from 2019 to 2024 YTD, and previous 5-year median.

Rabies, animal: 0 new case(s) of Rabies, animal reported November, 2024

Fig. 12. Cumulative Rabies, animal Cases
By Month of Report

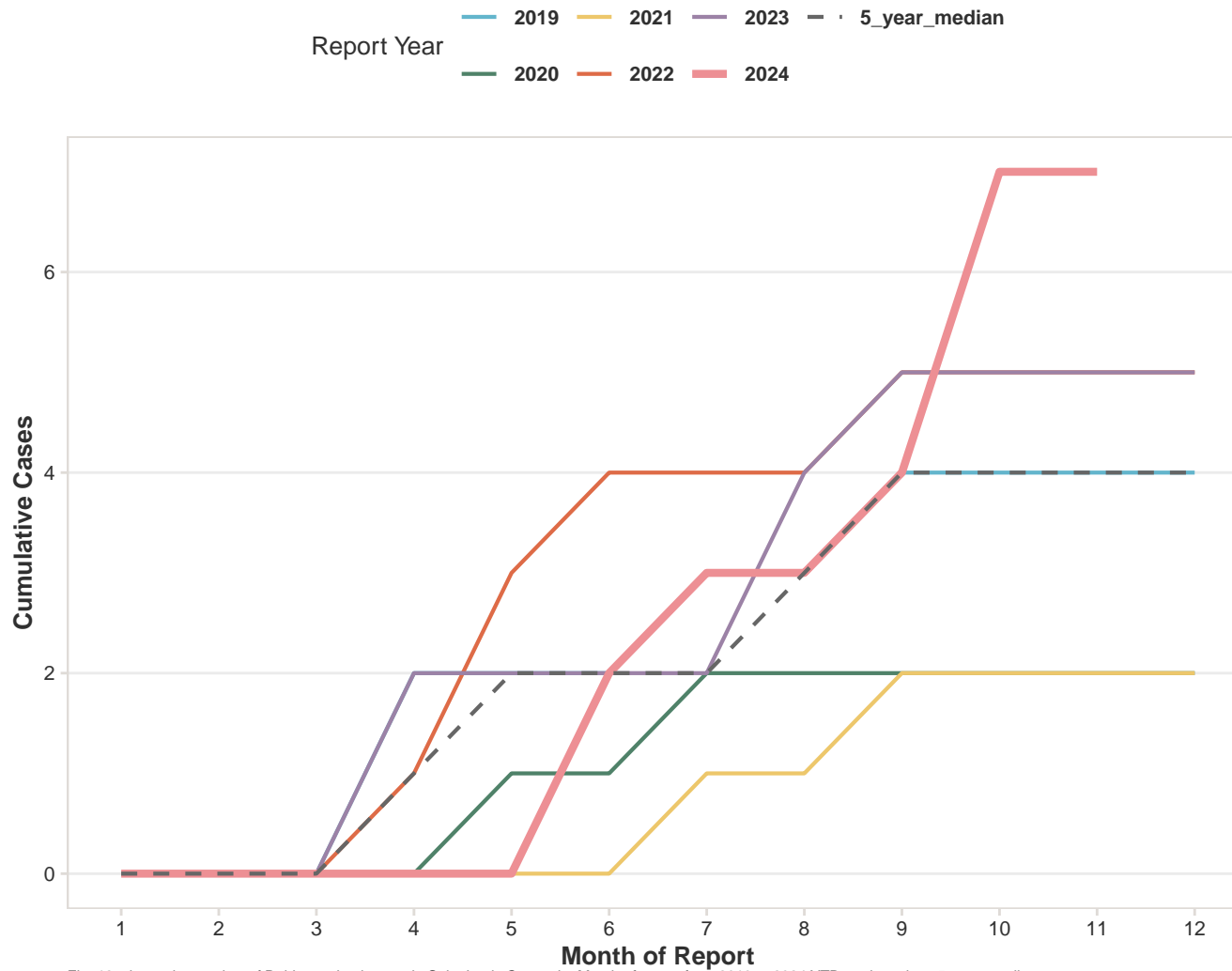


Fig. 12. shows the number of Rabies, animal cases in Saint Louis County by Month of report from 2019 to 2024 YTD, and previous 5-year median.

Salmonellosis: 13 new case(s) of Salmonellosis reported November, 2024

Fig. 13. Cumulative Salmonellosis Cases
By Month of Report

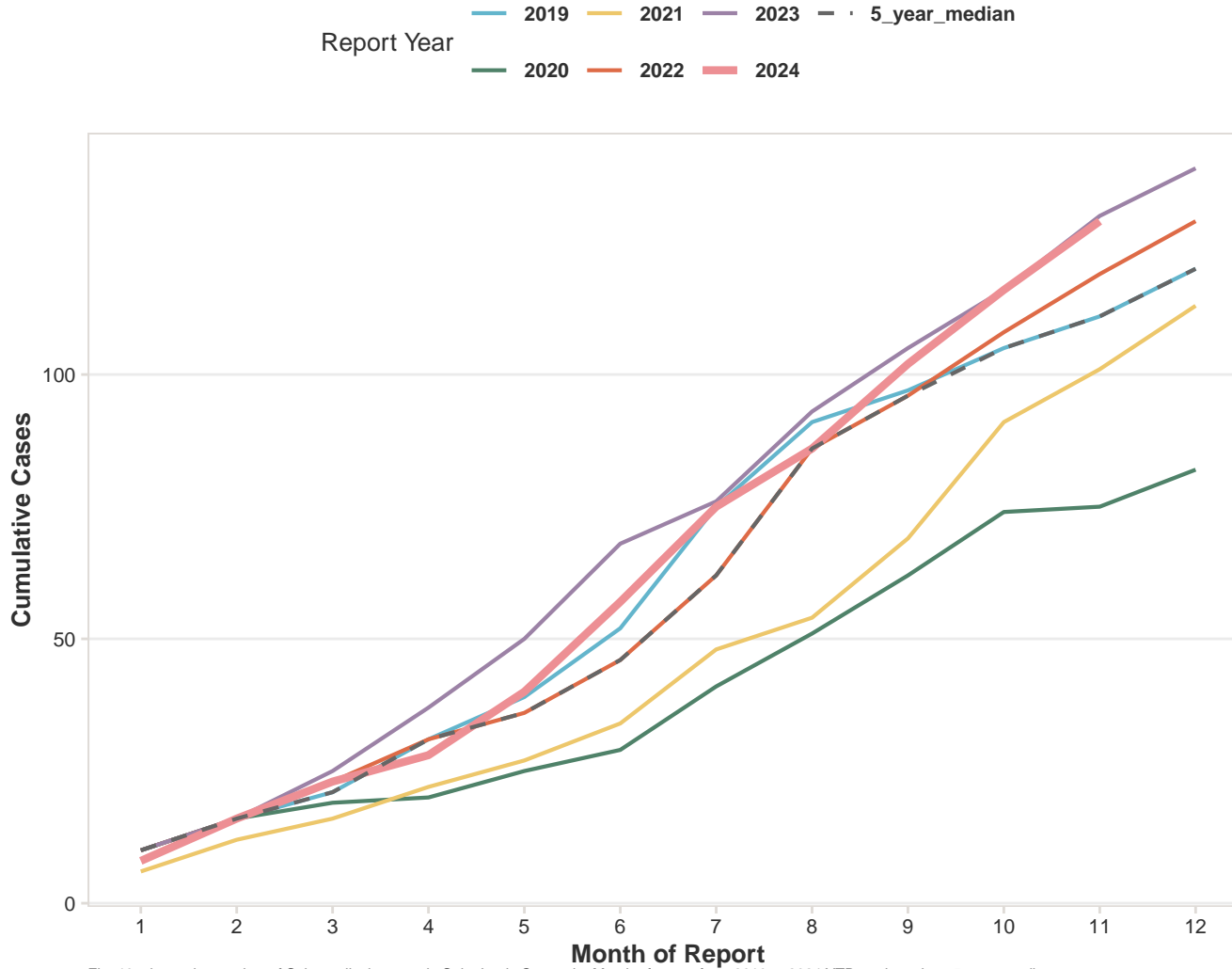


Fig. 13. shows the number of Salmonellosis cases in Saint Louis County by Month of report from 2019 to 2024 YTD, and previous 5-year median.

Shigellosis: 0 new case(s) of Shigellosis reported November, 2024

Fig. 14. Cumulative Shigellosis Cases
By Month of Report

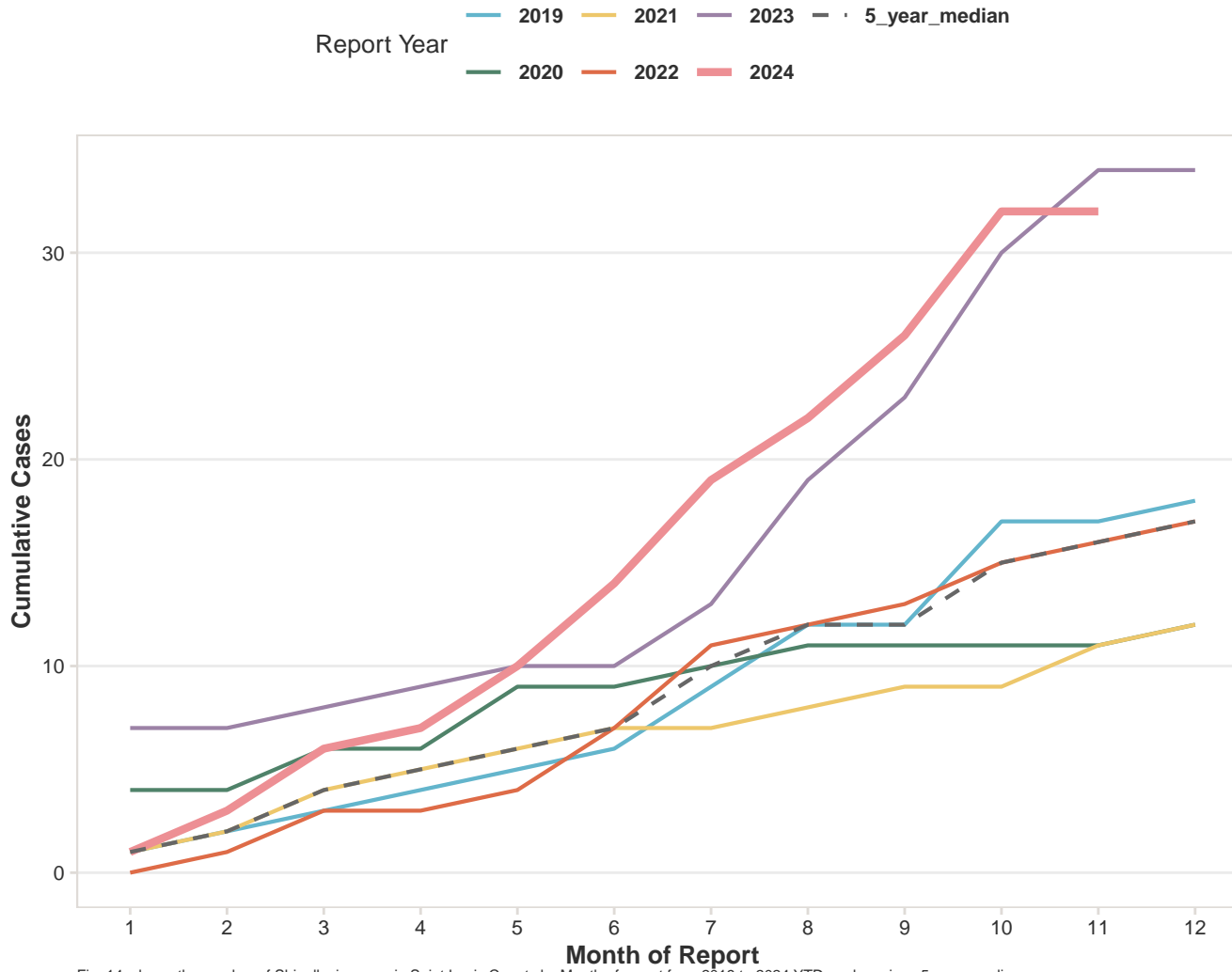


Fig. 14. shows the number of Shigellosis cases in Saint Louis County by Month of report from 2019 to 2024 YTD, and previous 5-year median.

TB disease: 3 new case(s) of TB disease reported November, 2024

Fig. 15. Cumulative TB disease Cases
By Month of Report

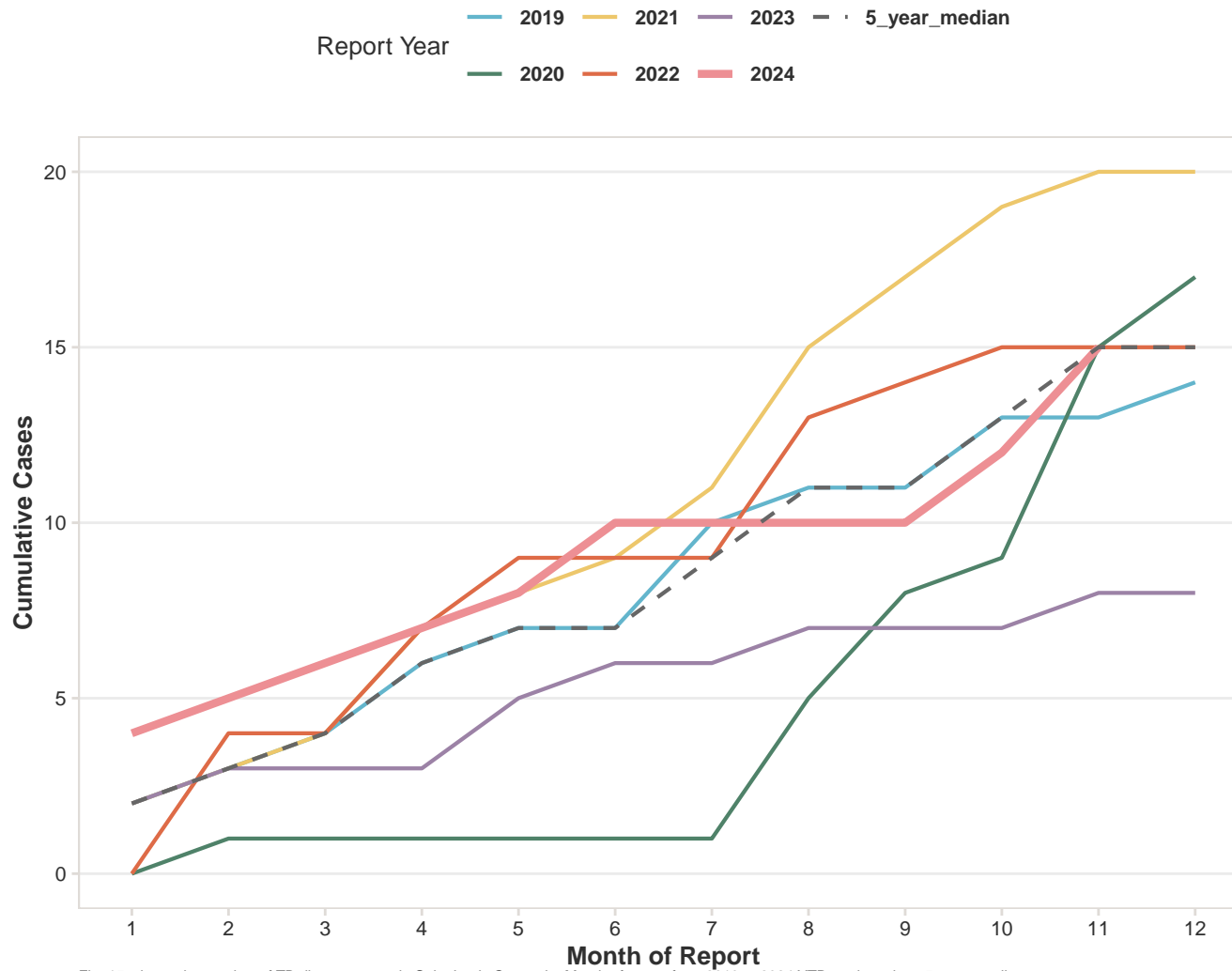


Fig. 15. shows the number of TB disease cases in Saint Louis County by Month of report from 2019 to 2024 YTD, and previous 5-year median.

West Nile virus: 0 new case(s) of West Nile virus reported November, 2024

Fig. 16. Cumulative West Nile virus Cases
By Month of Report

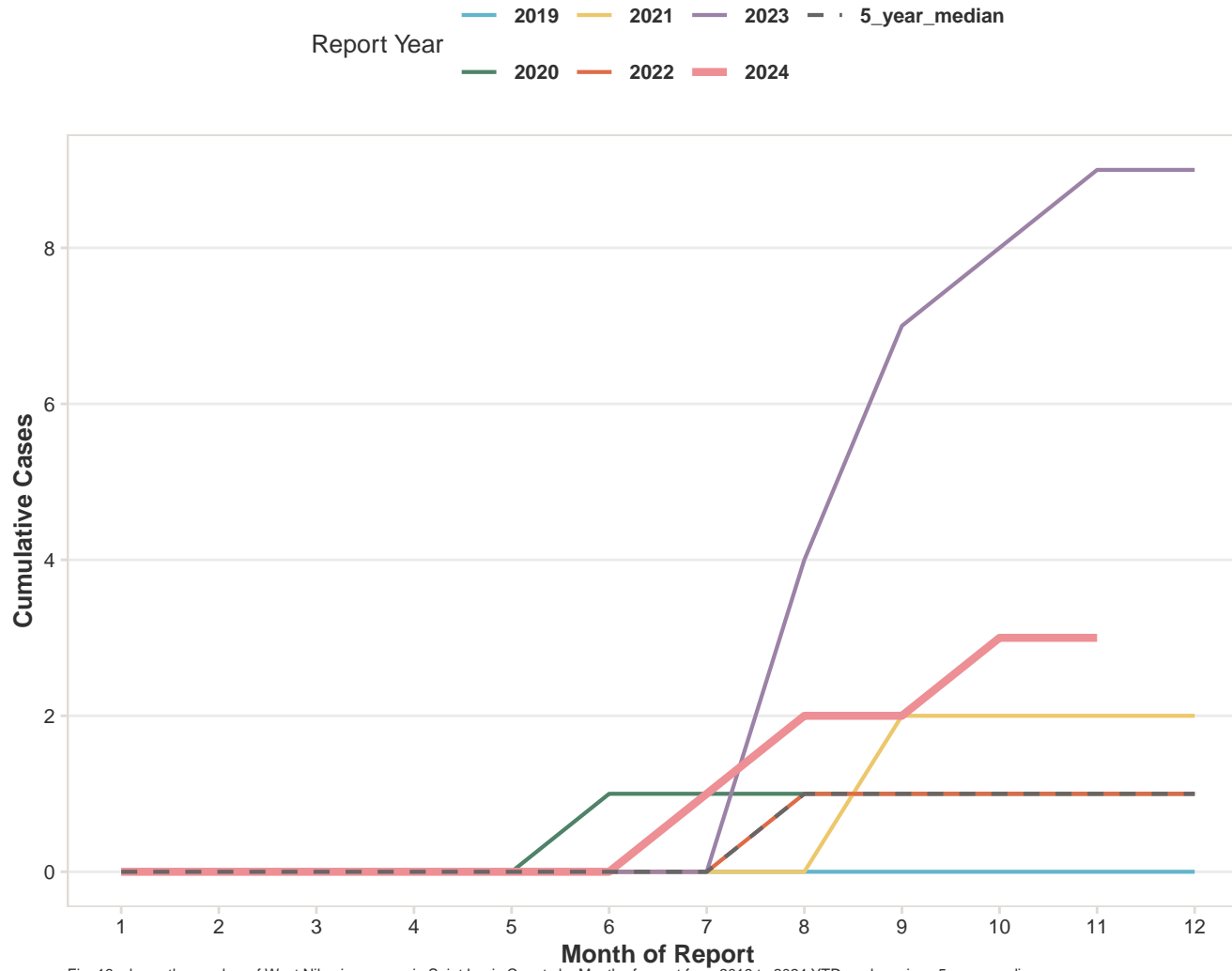


Fig. 16. shows the number of West Nile virus cases in Saint Louis County by Month of report from 2019 to 2024 YTD, and previous 5-year median.

Varicella (chickenpox): 0 new case(s) of Varicella (chickenpox) reported November, 2024

Fig. 17. Cumulative Varicella (chickenpox) Cases
By Month of Report

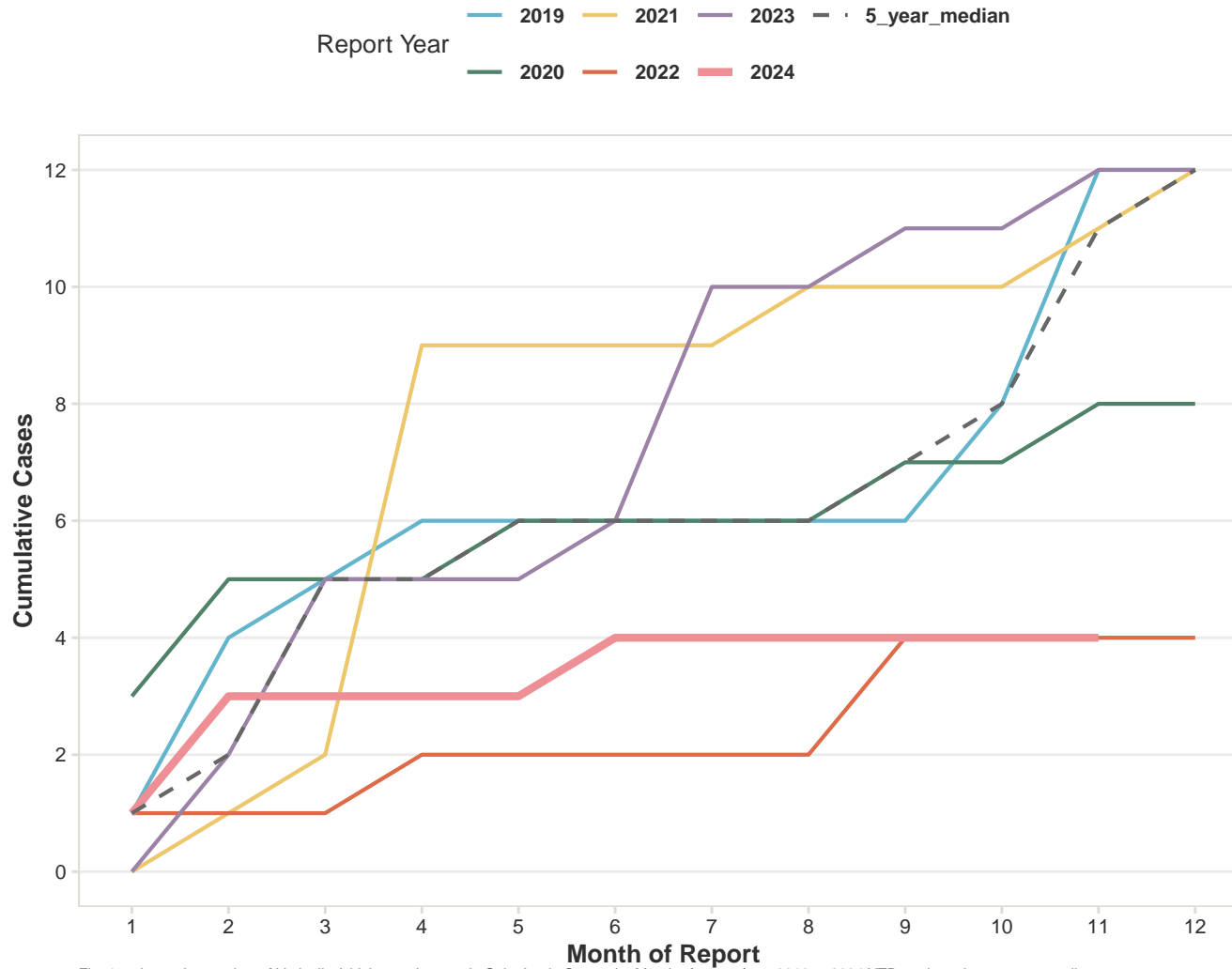


Fig. 17. shows the number of Varicella (chickenpox) cases in Saint Louis County by Month of report from 2019 to 2024 YTD, and previous 5-year median.